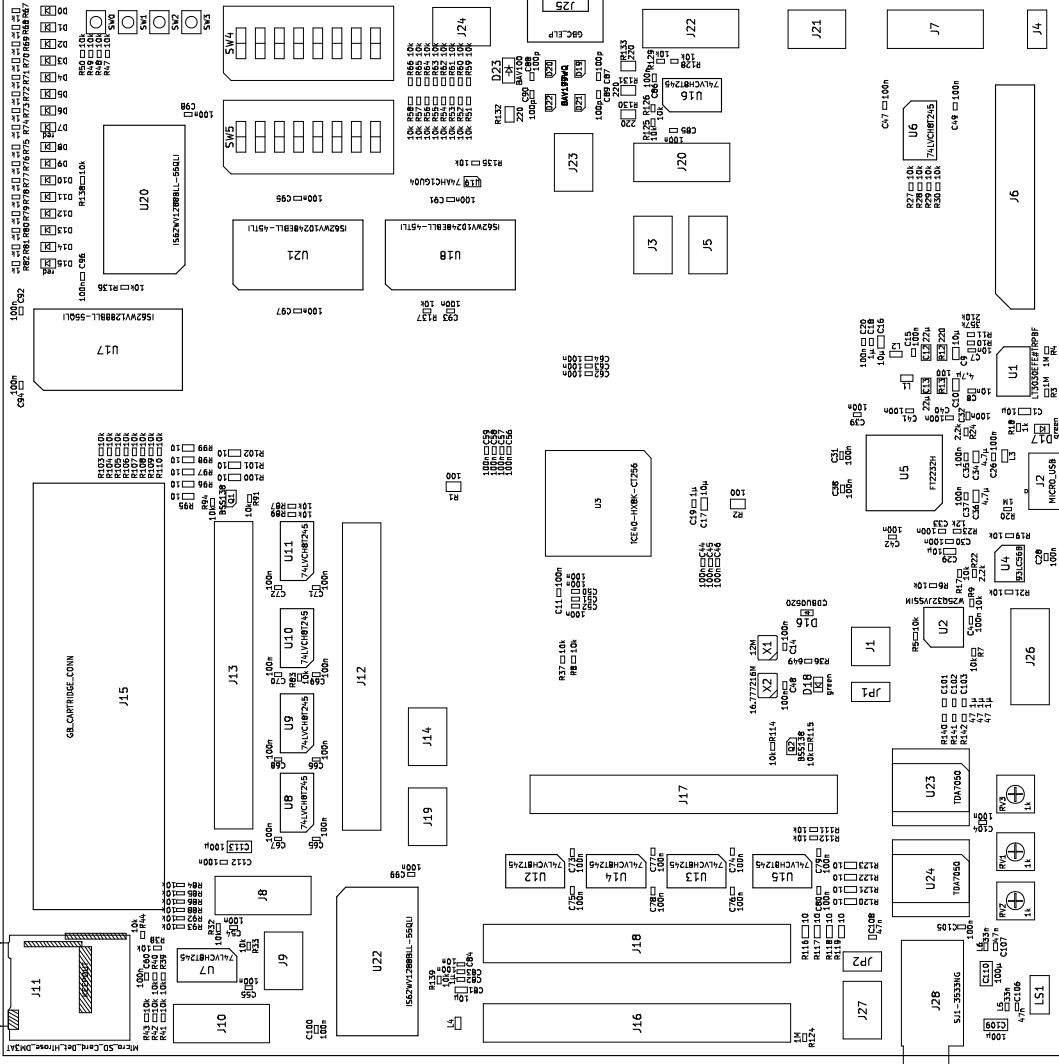


J13&J15: Game Boy Cartridge Connector (5V)
J12: Game Boy Cartridge Connector (3.3V)



J10: GPIO A0-A7 (5V)
J8: GPIO A0-A7 (3.3V)

J16: GB Cart. Bus Slave Adapter Pinout
J18: GB Cart. Bus Slave (5V)
J17: GB Cart. Bus Slave (3.3V)

LS1: Mono Spkr. (5V)

J26: Line Out (3.3V)

J6: Game Boy (DMG) Disp./Keybrd./Spkr. Connector (5V)

<https://iceboy.a-singer.de/>
<https://sourceforge.net/projects/iceboy/>
 Author: Michael Singer

Sheet:
 File: fpgaboard.kicad_pcb
Title: Game Boy reverse eng. FPGA board
 Size: A4 Date: 2019-01-20
 KiCad E.D.A. kicad 4.0.6

Rev. 0
 Id: 1/1